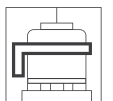


# TOSA

STRETCH WRAPPING TECHNOLOGY



Rotating ring

## TOSA 126

# THE STRETCH WRAPPER TOSA 126

The Pallet Stretch Wrapper Model TOSA 126 with rotating ring is positioned in the top segment of the market, able to respond to high capacity demands thanks to the **ring rotation speed of 55 rpm** and the possibility to use **500 mm or 750 mm wide film rolls**.

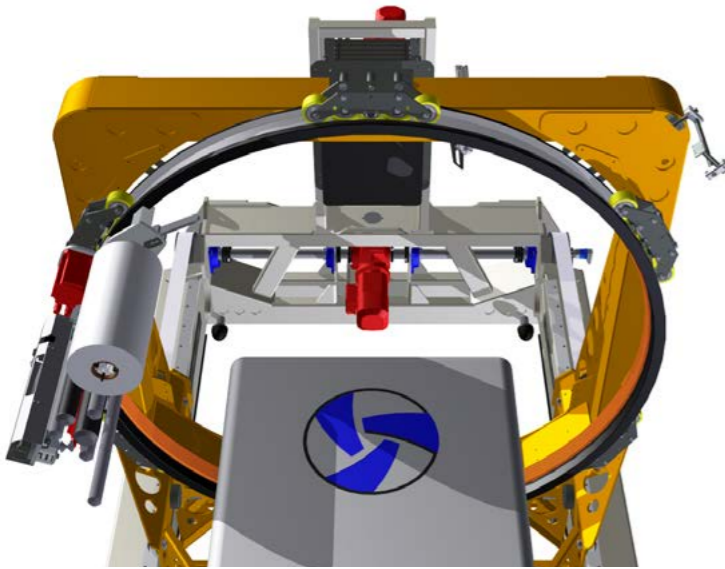
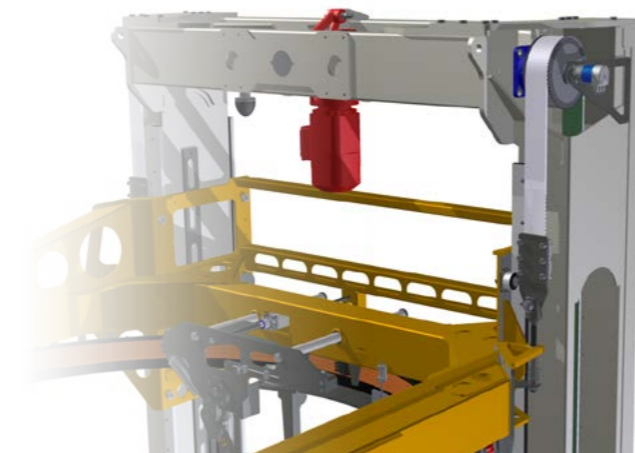
The machine has been designed specifically **to minimize the maintenance costs and the film consumption**.

## MACHINE BASIC CONFIGURATION

- Automatic powered pre-stretch.
- Sealing unit with contrast-bar for welding the film without any contact with the product.
- Inverters and Encoders for maximum precision for movement control.
- **Operator panel 6" colour** with graphical interface for easy use and understanding:
  - manual movement operations;
  - alarm and fault indication;
  - it is possible to prepare wrapping programs, dedicated to each product format with variable parameters such as film tension, wrapping cycle type, spiral pitch overlap, film pre-stretch (option) and position of film roping (option).

## REDUCTION OF MAINTENANCE COSTS

- Up-down movement of the ring by means of toothed belts, completely maintenance and lubrication free.
- Gearless direct motorization of the ring lifting system, with no need for maintenance.
- Use of lubrication free guiding wheels and of special guide ways for the ring carriage, requiring lubrication only on a greatly reduced frequency and only in case of operating in highly dusty environments.
- Lubrication free bearings are used on the machine.



## REDUCTION OF STRETCH FILM CONSUMPTION

- The use of a film roll 750 mm wide allows not only to reduce the number of film wraps needed for completing the wrapping cycle, but also to cover a wider surface of the product with each wrap, increasing the stability of the load.
- Film roping system functions by reducing the film width from the bottom and the top by means of two independent compression wheels, driven by brushless motors with an encoder, which allows the setting of the film band width, in any position on the pallet with precision.
- The pallet lifter allows to also wrap the base of the pallet with the film rope.



## OPTIONAL TOSA 126

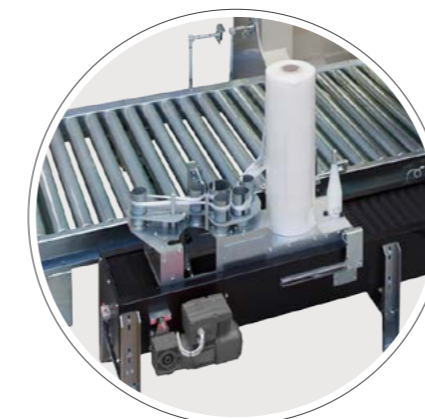


### PRE-STRETCH WITH DOUBLE BRUSHLESS MOTORIZATION

The two pre-stretch rollers are independently driven by two state-of-the-art brushless motors.

Allowing the possibility to program wrapping cycles with a pre stretch ratio variable from 0 to 400%.

Optimizing film distribution on the pallet during all wrapping phases



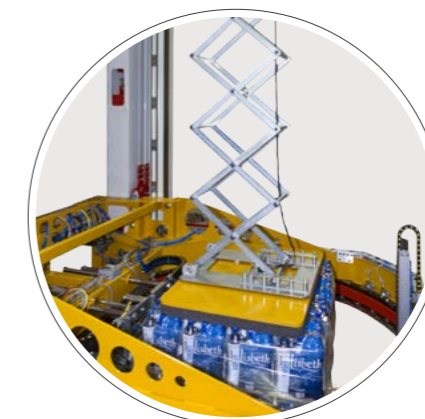
### AUTOMATIC STRETCH FILM ROLL CHANGE SYSTEM

The automatic stretch film roll change system, model TOSA 801, allows the replacement of the exhausted film-roll in 30 seconds with no operator intervention. **Patented in Europe and America.**



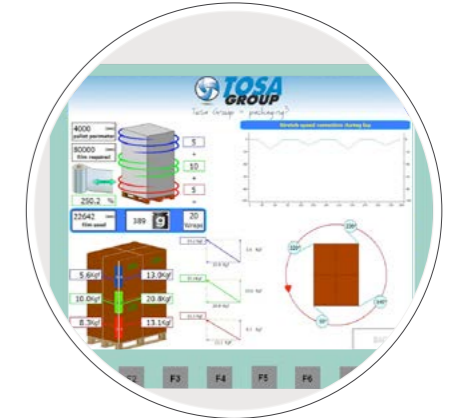
### TOP SHEET DISPENSING UNITS FOR DUST PROOF OR WATER PROOF PROTECTION

The systems for the application of a plastic top sheet to protect the pallet load can be supplied also with two film-roll positions, which can be automatically selected to increase the film autonomy reducing the machine stops for film-roll changeover. Available also with an automatic top sheet film roll changing system, eliminating machine stops required to replace the exhausted film-rolls.



### MOTORIZED PANTOGRAPH TYPE TOP PRESSER

This motorized device ensures maximum flexibility of use, reduction of overall height of the equipment and optimization of energy consumptions where a top presser is required. Thanks to the use of lubrication free bearings, this unit does not need any maintenance.



### SMART WRAPPING TECHNOLOGY

Allows for the possibility to detect and historicize data, such as, film consumption, cycle times, product data, wrapping programs, film features and real pre-stretch used for each wrapped pallet load. Allows for the possibility to automatically optimize the distribution of the film during the wrapping phases according to the detected size of the palletized load.



### AUTOMATIC APPLICATION OF VERTICAL CORNER POSTS

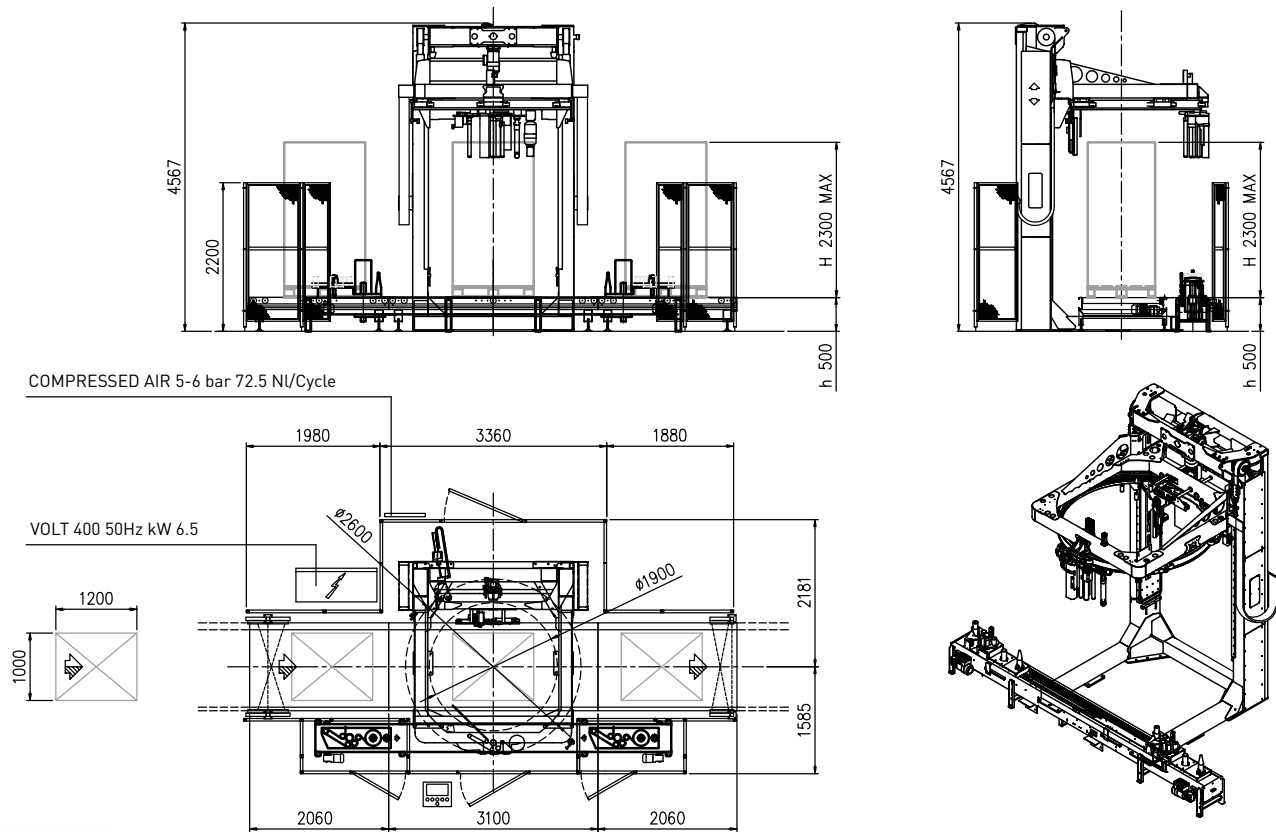
This system for the automatic application of vertical corner posts is to provide protection to the corners of pallet loads, where additional protection is required; it is available with corner post magazines for different sizes.

# TECHNICAL LAYOUT

TOSA 126

Voltage	<b>400 V three-phases – 50 Hz. + N.</b>	Required film	<b>PE stretch film</b>
Installed power	<b>6,5 kW</b>	Output	<b>up to 130 pallet/hour according to wrapping cycle and pallet height</b>
Compressed air feed	<b>5-6 bar</b>	Max pallet dimensions	<b>1000 x 1200 x H. 2000 mm</b>
Compressed air consumption	<b>72,5 NI/cycle</b>		

All technical specifications are subject to change without notice.



TOSA S.p.a.

Corso IV Novembre, 109-111  
 12058 S. Stefano Belbo (CN), Italy  
 Tel. +39 0141 841000  
 Fax +39 0141 841099  
 info@tosa.it



[tosagroup.net](http://tosagroup.net)