



ATECMAA
P A C K A G I N G

GX 2.52

Multi-programme and automatic cycle
wrapping machine

Master any kind of load, from light-weight to heavy loads thanks to multiprogrammes

Exceptional wrapping quality including unsteady loads

Touchscreen control panel can be installed remotely

Ergonomic film loading system

Ease of use

- Manual top sheet mode
- Height of the pallet: up to 2400 mm (standard machine)
- Automatic detection of the height of the pallet
- Progressive start of the turntable
- Electromagnetic brake (patent pending)
- 20 to 200 pallets/day
- 9 multiprogrammes
- Embedding belt, weigh integrated scale within the wrapping : optional



Flexibility of the logistics : plug in to a simple 230 V single phase + earth

Any type of stretch machine films up to 23 µ thick available on the market

TECHNOLOGIES ET PROCESS D'EMBALLAGE

32, rue de Charette • 28140 TERMINIERS - FRANCE
Tél : 33 (0)2 37 18 58 13 - Fax : 33 (0)2 37 32 11 34 ou 33 (0)2 37 32 14 22
www.rassinouxa.com - Commercial production : clients@rassinouxa.com
Comptabilité : compta.mf@rassinouxa.com - Qualité : qualite@rassinouxa.com

RASSINOUX - SA au capital de 1 372 754 € - SIRET 353 267 446 00014 - APE 284B - FR 41 353 267 446 - RCS 353 267 446 Chartres



ATECMAA
PACKAGING

Programmable automate



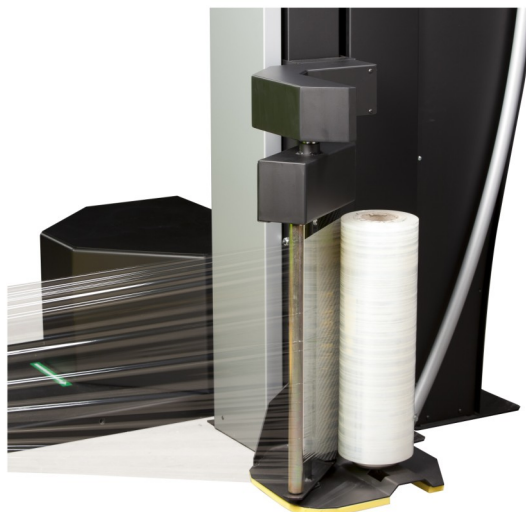
GX 2.52

Multi-programme and automatic cycle wrapping machine

Touchscreen control panel can be installed remotely



Electromagnetic brake carriage lifted automatically at ergonomic height when changing the roll



TECHNOLOGIES ET PROCESS D'EMBALLAGE

32, rue de Charette • 28140 TERMINIERS - FRANCE
Tél : 33 (0)2 37 18 58 13 - Fax : 33 (0)2 37 32 11 34 ou 33 (0)2 37 32 14 22
www.rassinouxa.com - Commercial production : clients@rassinouxa.com
Comptabilité : compta.mf@rassinouxa.com - Qualité : qualite@rassinouxa.com

RASSINOX - SA au capital de 1 372 754 € - SIRET 353 267 446 00014 - APE 284B - FR 41 353 267 446 - RCS 353 267 446 Chartres



Multi-programme and automatic cycle stretch wrapping machine

TECHNICAL FEATURES:

- Installed power:	1.4 KW
- Power:	230V Single phase 50hz + earth
- Manufacture:	IP54

Dimensions:

- Length :	2565 mm / 2615 mm*
- Width:	1976 mm / 2026 mm*
- Overall height:	2900 mm / 3400 mm*
- Weight:	480 Kg (or 550 kg*)

Accepted dimensions of the pallets:

- Length:	1200 mm
- Width:	800 or 1000 mm (or 1200 mm*)
- Height:	2400 (or 2900 mm**)
- Maximum load:	1500 Kg

ASSEMBLED PARTS OF THE MACHINE:

- Column: folded sheet metal made.	-Maximum pallet + load wrapping height:	2572 mm or 3072 mm**
---	---	-----------------------------

- **bobbin carriage** powered by a motor-reducer with a frequency converter, drive with pitch chain.
- 2 speeds: one wrapping up, one wrapping down, independant from each other during the cycle
- Detectors to stop at the top and the bottom
- Cell for automatic detection of the height of the pallet
- Safety device at the bottom of the bobbin rail, no risk for the operator of being crushed
- Tension control system to ensure a uniform film application force right round the palletized load
- Electronically controlled gripping force by a patented electromagnetic roll brake, according to 5 different instructions during the wrapping cycle
- Detection and indication of film breakage or end of roll
- **Lowered slung turntable**, protected by a peripheral belt

- Height:	79 mm
- Diameter:	1650 mm (or 1750 mm optional)

Driven by gear motor and 15.8 mm pitch chain

Speed progressively lowers at the « stop phase » (indexed stop)

Designed to be moved with a forklift truck (except for non standard turntables with diameters of 2000 and 2400 mm)

Polyamide peripheral roller bearings

A tooth disc supported roller bearing for combined loads

- **Automation managed by touchscreen programmable automate, settings adjustable on an operator control panel**
- **Polymerized epoxy polyester coating, 80 to 100 µ thick with anti-corrosion pre-treatment**
- **Colours: anthracite grey RAL 7016, yellow RAL 1018 for the turntable**
- **IP level of protection: IP 54 (motor-reducer IP 55)**



HOW TO USE:

- **3 wrapping programmes** accessible by default when turning the machine On
- **12 wrapping setpoints**, with capacity to change the following settings

Functions		« standard » Programmes
Cycles	Full cycle (wrapping up and down)	<input checked="" type="checkbox"/>
	Half – cycle (wrapping up only)	<input checked="" type="checkbox"/>
	Full cycle with application of the top sheet (stops at the top to apply the sheet)	<input checked="" type="checkbox"/>
	Reinforced full cycle (intermediate overlaps at programmable height)	<input checked="" type="checkbox"/>
	Multifunction cycle (manual cycle and palletizing onto the turntable)	<input checked="" type="checkbox"/>
Overlaps	At the bottom of the pallet, at the start of the cycle	<input checked="" type="checkbox"/>
	At the top of the pallet	<input checked="" type="checkbox"/>
	At the bottom of the pallet, at the end of the cycle	<input checked="" type="checkbox"/>
Film stretching	At the start of the cycle at, the bottom of the pallet	<input checked="" type="checkbox"/>
	At the top of the pallet	<input checked="" type="checkbox"/>
	Wrapping down	<input checked="" type="checkbox"/>
	At the end of the cycle, at the bottom of the pallet	<input checked="" type="checkbox"/>
Speed of the turntable	At the start of the cycle at the bottom of the pallet	<input checked="" type="checkbox"/>
	Wrapping up and at the top of the pallet	<input checked="" type="checkbox"/>
	Wrapping down	<input checked="" type="checkbox"/>
	At the end of the cycle at the bottom of the pallet	<input checked="" type="checkbox"/>
Speed of the carriage	Wrapping up	<input checked="" type="checkbox"/>
	Wrapping down	<input checked="" type="checkbox"/>

- Identification code to protect from unwanted changes
- Those different levels enable wrapping most of the existing types of loads
- Set programmes preserved by mechanical protection and material key
- General settings preserved by mechanical protection, material key + password

GENERAL USE:

- Loading the pallet onto the turntable
- Select a programme among the 12 ones in memory
- Starting the cycle
- Wrapping proceeds in accordance with the selected programme
- Cycle finishes with the pallet positioned to be picked up
- Cut film manually and pre-attaching on the turntable (if no automatic cut option)

- At the end of the cycle, « statistics functions » available:

- Weight of applied film
- Cost price of pallet
- Number of pallets wrapped

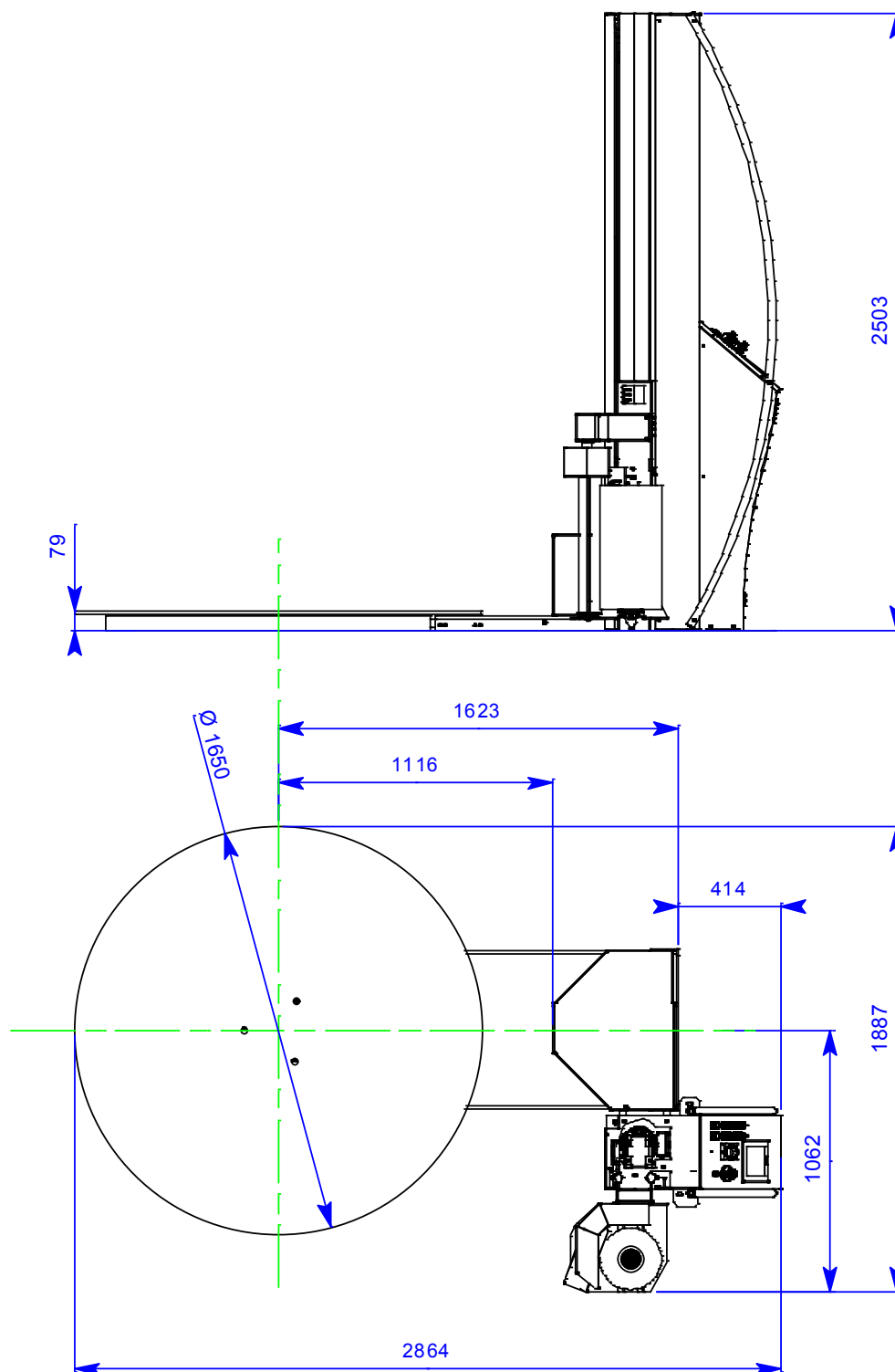


ATECMAA
PACKAGING

GX 2.52

Automatic cycle and engine powered pre-stretched stretch wrapping machine

DIMENSIONS:



European made machines in compliance with the applicable EU regulations (CE)

NON CONTRACTUAL DOCUMENT :Considering the evolution of the machines, we may change at any time our products, dimensions texts and drawings, without any prior notice; The complete or partial reproduction without express permission is prohibited.

TECHNOLOGIES ET PROCESS D'EMBALLAGE

32, rue de Charette • 28140 TERMINIERS - FRANCE
Tél : 33 (0)2 37 18 58 13 - Fax : 33 (0)2 37 32 11 34 ou 33 (0)2 37 32 14 22
www.rassinouxa.com - Commercial production : clients@rassinouxa.com
Comptabilité : compta.mf@rassinouxa.com - Qualité : qualite@rassinouxa.com