



ATECMAA
P A C K A G I N G

GX 3.52

**Multi-programme and automatic cycle
motorized stretch wrapping machine**

For machine stretch film:

Maximum optimization of consumables, high return on investments and sustainable development

Exceptional wrapping quality, mastering different wrapping requirements from lightweight to heavy loads thanks to the mutiprogrammable control panel

Quick and easy roll change: simplified film path

Engine powered pre-stretching rate up to 250 %

Ease of use and tension control system

- Touchscreen programmable control panel with password
- Height of the pallet: up to 2400 mm (standard machine)
- Statistics functions available (number of pallets wrapped, weight of applied film, cost price of pallet)
- Carriage lifted to ergonomic height
- Progressive start of the turntable
- Electromagnetic brake (patent pending)
- 20 to 250 pallets/day
- Flush floor fitting: optional
- Integrated weighing, automatic cut: optional



Flexibility of the logistics : plug in to a simple 230 V single phase + earth / Foldable for transport—

Any type of stretch machine films up to 23 µ thick available on the market

TECHNOLOGIES ET PROCESS D'EMBALLAGE

32, rue de Charette • 28140 TERMINIERS - FRANCE
Tél : 33 (0)2 37 18 58 13 - Fax : 33 (0)2 37 32 11 34 ou 33 (0)2 37 32 14 22
www.rassinouxa.com - Commercial production : clients@rassinouxa.com
Comptabilité : compta.mf@rassinouxa.com - Qualité : qualite@rassinouxa.com

RASSINOUX - SA au capital de 1 372 754 € - SIRET 353 267 446 00014 - APE 284B - FR 41 353 267 446 - RCS 353 267 446 Chartres



ATECMAA
PACKAGING

GX 3.52

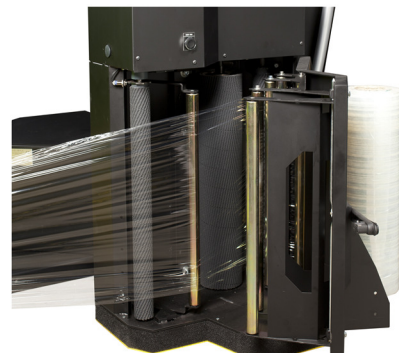
Multi-programme and automatic cycle motorized stretch wrapping machine

Programmable automate

Touchscreen control panel can be installed remotely



Motorized pre-stretch carriage lifted automatically to ergonomic height when changing the roll



TECHNOLOGIES ET PROCESS D'EMBALLAGE

32, rue de Charette • 28140 TERMINIERS - FRANCE
Tél : 33 (0)2 37 18 58 13 - Fax : 33 (0)2 37 32 11 34 ou 33 (0)2 37 32 14 22
www.rassinouxa.com - Commercial production : clients@rassinouxa.com
Comptabilité : compta.mf@rassinouxa.com - Qualité : qualite@rassinouxa.com



ATECMAA
PACKAGING

Its use lays on the following main criteria

Reliability: the machine is managed by programmable automate

Innovation: Accessibility to a large selection of settings within the programmes

Return on investments: Functions and adaptability of the machine enable to adjust the setting in the best way

TECHNICAL FEATURES:

- Installed power:	1.4 KW
- Power:	230V Single phase 50hz + earth
- Manufacture:	IP 54

Dimensions:

- Length :	2862 mm / 2912 mm*
- Width:	1976 mm / 2026 mm*
- Overall height:	2900 mm / 3400 mm*
- Weight:	500 Kg (or 570 kg*)

Accepted dimensions of the pallets:

- Length:	1200 mm
- Width:	800 or 1000 mm (or 1200 mm*)
- Height:	2400 (or 2900 mm**)
- Maximum load:	1500 Kg

ASSEMBLED PARTS OF THE MACHINE:

- **Column:** folded sheet metal made.

-Maximum pallet +
load wrapping height: **2572 mm or 3072 mm****

- **Carriage** driven by geared motor with frequency converter and chain.

- Top/bottom stop detectors
- Cell for automatic detection of the height of the pallet
- Safety device at the bottom of the carriage, eliminating crush risks
- 2 speeds: one wrapping up, one wrapping down, independant from each other during the cycle
- Engine powered pre-stretching, fixed rate at 250 %, 200% or 150 % made by pinion and chain or variable rate from 0 to 300 %
- Tension control system to ensure a uniform film application force right round the palletized load
- Electronically controlled gripping force by a patented electromagnetic roll brake, according to 5 different instructions during the wrapping cycle
- Detection and indication of film breakage or end of roll

- **Low slung turntable**, protected by a peripheral belt - Height:

79 mm

- Diameter:

1600 mm (or 1750 mm optional)

Driven by geared motor and 15.8 mm chain

Speed progressively lowers at the « stop phase » (indexed stop)

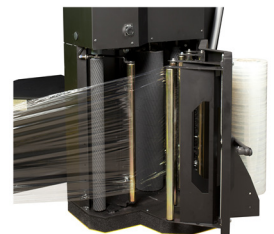
Speed programmable to 4 different setpoints during wrapping phase

Maximum load: 1500 kg

- **Automation** managed by touchscreen programmable automate, settings adjustable on an operator control panel

- **Polymerized epoxy polyester coating**, 80 to 100 µ thick with anti-corrosion pre-treatment

- **Colours:** anthracite grey RAL 7016, yellow RAL 1018 for the turntable





ATECMAA
PACKAGING

Multi-programme and automatic cycle motorized stretch wrapping machine

HOW TO USE:

- **3 wrapping programmes** accesible by default when turning the machine On
- **12 wrapping setpoints**, with capacity to change the following settings

	Functions	« standard » Programmes
Cycles	Full cycle (wrapping up and down)	<input type="checkbox"/>
	Half – cycle (wrapping up only)	<input type="checkbox"/>
	Full cycle with application of the top sheet (stops at the top to apply the sheet)	<input type="checkbox"/>
	Reinforced full cycle (intermediate overlaps at programmable height)	<input type="checkbox"/>
	Multifunction cycle (manual cycle and palletizing onto the turntable)	<input type="checkbox"/>
Overlaps	At the bottom of the pallet, at the start of the cycle	<input type="checkbox"/>
	At the top of the pallet	<input type="checkbox"/>
	At the bottom of the pallet, at the end of the cycle	<input type="checkbox"/>
Film stretching	At the start of the cycle at, the bottom of the pallet	<input type="checkbox"/>
	At the top of the pallet	<input type="checkbox"/>
	Wrapping down	<input type="checkbox"/>
	At the end of the cycle, at the bottom of the pallet	<input type="checkbox"/>
Speed of the turntable	At the start of the cycle at the bottom of the pallet	<input type="checkbox"/>
	Wrapping up and at the top of the pallet	<input type="checkbox"/>
	Wrapping down	<input type="checkbox"/>
	At the end of the cycle at the bottom of the pallet	<input type="checkbox"/>
Speed of the carriage	Wrapping up	<input type="checkbox"/>
	Wrapping down	<input type="checkbox"/>

- Identification code to protect from unwanted changes
- Those different levels enable wrapping most of the existing types of loads
- Set programmes preserved by mechanical protection and material key
- General settings preserved by mechanical protection, material key + password
- Ability to set the indexed position of the turntable at the end of the cycle from 0 to 270 °
- Carriage lifted to ergonomic height for changing the roll

GENERAL USE:

- Loading the pallet onto the turntable
- Select a programme among the 12 ones in memory
- Starting the cycle
- Wrapping proceeds in accordance with the selected programme
- Cycle finishes with the pallet positioned to be picked up
- Cut film manually and pre-attaching on the turntable (if no automatic cut option)
- Loading a new pallet

- At the end of the cycle, « statistics functions » available:

- Weight of applied film
- Cost price of pallet
- Number of pallets wrapped

TYPES OF FILM: Any type of machine stretch film up to 23 µ thick (width 50 to 500 mm – diameter of the roll 250 mm, diameter of the roll core 76 mm)

TECHNOLOGIES ET PROCESS D'EMBALLAGE

32, rue de Charette • 28140 TERMINIERS - FRANCE

Tél : 33 (0)2 37 18 58 13 - Fax : 33 (0)2 37 32 11 34 ou 33 (0)2 37 32 14 22

www.rassinouxsa.com - Commercial production : clients@rassinouxsa.com

Comptabilité : compta.mf@rassinouxsa.com - Qualité : qualite@rassinouxsa.com

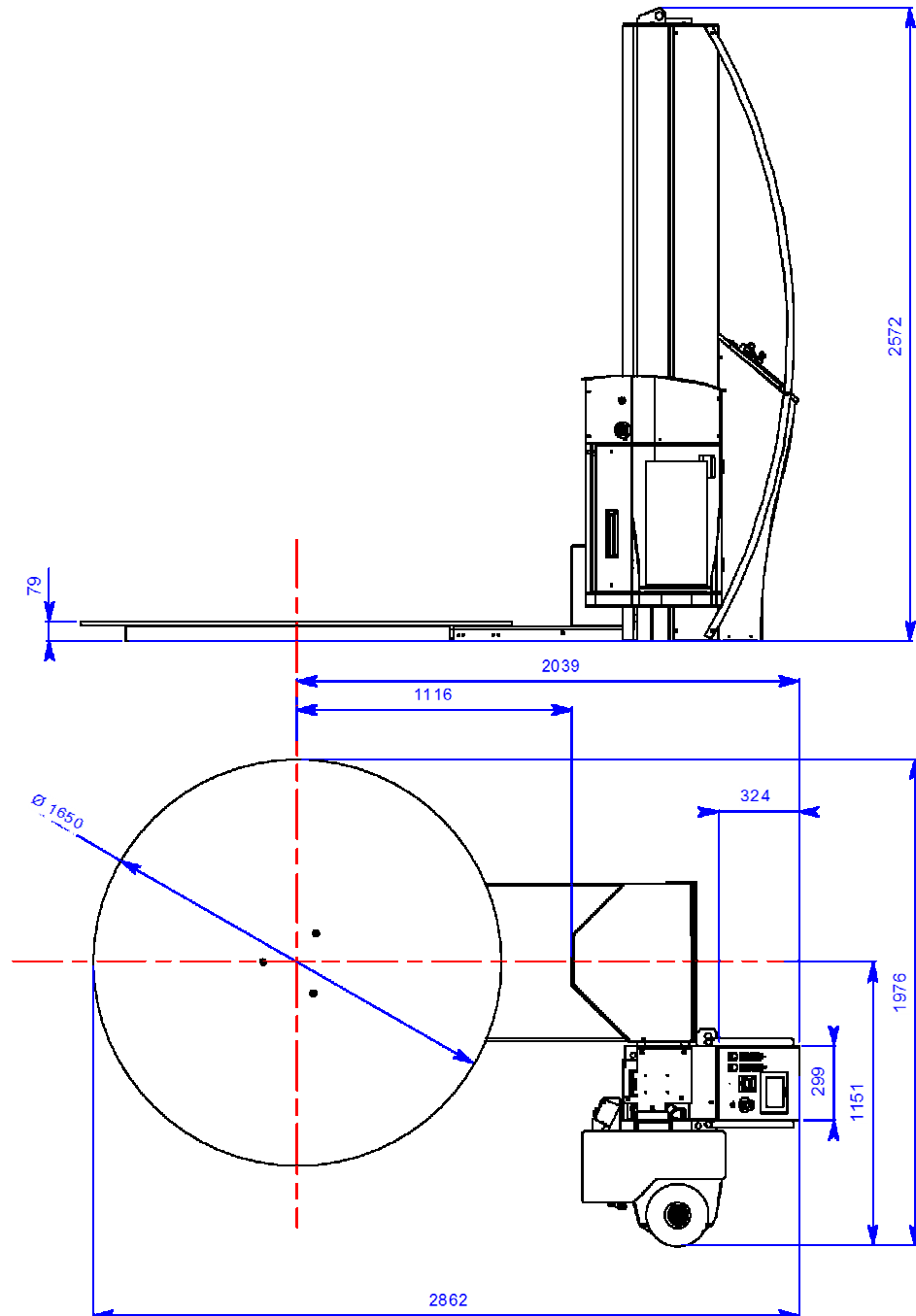


ATECMAA
PACKAGING

GX 3.52

Multi-programme and automatic cycle
motorized stretch wrapping machine

DIMENSIONS:



Equipment manufactured in France in accordance with the regulation in force (CE)

NON CONTRACTUAL DOCUMENT : In the light of the ongoing development of our products, we reserve the right to modify and change, at any time, our products, dimensions, texts and drawings. Any reproduction, whether in part in whole, is strictly forbidden without written authorization.

TECHNOLOGIES ET PROCESS D'EMBALLAGE

32, rue de Charette • 28140 TERMINIERS - FRANCE

Tél : 33 (0)2 37 18 58 13 - Fax : 33 (0)2 37 32 11 34 ou 33 (0)2 37 32 14 22

www.rassinouxa.com - Commercial production : clients@rassinouxa.com

Comptabilité : compta.mf@rassinouxa.com - Qualité : qualite@rassinouxa.com